

0200H002137

Health Smart

Designer Series

PINE-TREE SID

VG-CAN ST

Mr Sam x EX-91 DOM Finley EX-92-3E GMD DOM Rudolph

| | |
|--------------------|--------|
| CONFORMATION | +18 |
| MAMMARY SYSTEM | +17 |
| DAIRY STRENGTH | +14 |
| FAT | +1.4% |
| PROTEIN | +0.03% |
| HERD LIFE | +108 |
| SOMATIC CELL SCORE | 2.90 |
| CALVING ABILITY | +102 |

CDN 11*APR

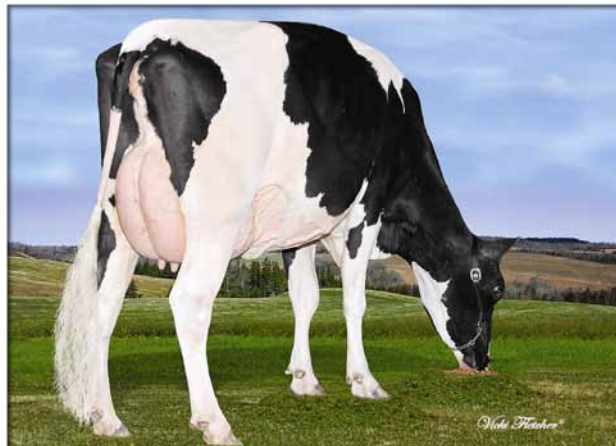


1st Lactation **GP-84-2YR-CAN**

GERVILLE SAULE SID Ferme Gerville, Baie De Febvre, PQ, Canada



2nd Lactation **VG-87-3YR-CAN**



1st Lactation **VG-86-2YR-CAN**

DESAIGLES JASMINE SID RENE DAIGLE, ST. EDOUARD, PQ, CANADA



2nd Lactation **VG-88-3YR-CAN**

EVERY DOSE COUNTS

Semex's commitment to excellence and our belief that Every Dose Counts guarantees that 200 code sires are the most reliable and profitable choice for dairymen.


SEMEX[®]
 ALLIANCE

The Power of Balanced Breeding[®]