



BEST GENETICS
ZW Aug.2011 FLEISCHRINDER



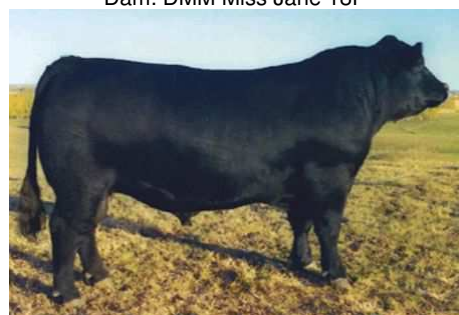
DMM TRACTION 34P

Sire: TC Stockman 365
DMM Traction 109J
DMM Miss Essence 22B

Dam: DMM Essoteric 67R
DMM Miss Jane 18F
DMM Miss Jane 37D



Dam: DMM Miss Jane 18F



Sire: DMM Traction 109J

Born: 1/31/2004 **Tattoo:** DMM 34P
Breeder: Miller Wilson Angus **Reg. #:** 1234208
Owner: Semex Alliance **BW:** 84 lbs
Weight: **AWW:** 825 lbs
Height: Frame 6.4 **AYW:** 1335 lbs
Scrotal: 38 cm **Stud code:** 200AN0303

★ 3 Calving ease
 ★ 4 Growth
 ★ 4 Maternal
 ★ 3 Carcass

CAA-S11	ACC	EPD	Average	TOP
BW	0.23	5.0		87%
WW	0.19	35		71%
YW	0.14	63		72%
MILK	0.18	19		37%
TM	--	37		54%
CE	P	0.5		63%
MCE	P	8.5		21%

Comments:

- EU eligible and EEC qualified, Traction comes from the Miller Wilson herd where they have built one of the top Angus female herds in Canada revolving around maternal power. Traction is a sire that will provide muscle, frame, thickness and plenty of maternal strength!!
- AMF & NHF

Available to: 🇨🇦 Canada, 🇺🇸 USA, 🌐 International, 🇪🇺 EU (European Union)



130 Stone Rd. West
Guelph, Ontario
Canada N1G 3Z2

Phone: 519-821-5060
Fax: 519-821-9606
info@semex.com



Bar 5 AN MORE DIRECTION 3405S

CA Future Direction 5321
Sire: LCC Few Dollars More 013N
 LCC Lakina K3218

HF Justice 52L
Dam: Prime Time's Eileen 307'03
 Prime Time's Eileen 29'99



Sire: LCC Few Dollars More 013N



Dam: Prime Time Eileen 307N

Born: 2/23/2006
Breeder: Prime Time Cattle
Owner: Bar 5 Stock Farms Ltd. & Claudia Junqueira
Weight:
Height: Frame 5.9
Scrotal: 35.5 cm

Tattoo: COAR 3405S
Reg. #: 1358070
BW: 85 lbs
AWW: 775 lbs
AYW: 1408 lbs
Stud code: 200AN0102

★ 4 Calving ease
 ★ 3 Growth
 ★ 4 Maternal
 ★ 4 Carcass

CAA-F09	ACC	EPD	Average	TOP
BW	0.05	1.8		28%
WW	0.05	37		61%
YW	0.05	68		59%
MILK	0.05	23		16%
TM	0.05	41		32%
YG	0.05	31		52%

Comments:

- More Direction is a great combination of USA's top carcass genetics and one of Canada's top cow families. He is a well structure calf with great depth of body and muscle expression.
- AMF- NHF

Available to: 🇨🇦 Canada, 🇺🇸 USA, 🌐 International, 🇪🇺 EU (European Union)



130 Stone Rd. West
 Guelph, Ontario
 Canada N1G 3Z2

Phone: 519-821-5060
Fax: 519-821-9606
info@semex.com



Cedardale REBEL 3R

Sire: S\$ Montana Silver
LT Silver Value 2122
LT Unlimited Maid

Dam: Baldrige Fastrack 82F
Cedardale Memorable 19M
Cedardale Ms Juniper 12J



Dam: Cedardale Memorable 19M

Born: 1/19/2005 **Tattoo:** CED 3R
Breeder: Cedardale Charolais **Reg. #:** MC294731
Owner: Cedardale Charolais **BW:** 92 lbs
Weight: **AWW:** 840 lbs
Height: Frame 6.3 **AYW:** 1391 lbs
Scrotal: 35 cm **Stud code:** 200CH0102

★ 5 Calving ease
 ★ 4 Growth
 ★ 4 Maternal
 ★ 4 Carcass

CCA-F11	ACC	EPD	Average	TOP
CE	0.52	65	■	45%
BW	0.75	1.5	■	40%
WW	0.53	56	■	3%
YW	0.42	95	■	15%
SC	PE	-0.10	■	35%
MILK	0.31	17.2	■	85%
TM	0.38	45	■	20%
CW	0.50	13	■	35%
REA	0.50	0.02	■	65%
FAT	0.50	0.68	■	80%
LY	0.51	-1.12	■	80%
MARB	0.43	0.02	■	60%

Comments:

- Rebel is one of the all-time highest selling Charolais bulls, made popular for his ability to provide calving ease and maternal strength
- He is a great combination of performance from his paternal side and maternal strength and calving ease on his bottom side
- Rebel has been sampled in 36 countries and is a major component of the current Thai synthetic breed being developed in Thailand
- Use Rebel for his balance of calving ease, maternal strength and easy fleshing abilities
- Homo Polled

Available to: 🇨🇦 Canada, 🇺🇸 USA, 🌐 International, 🇪🇺 EU (European Union)



130 Stone Rd. West
Guelph, Ontario
Canada N1G 3Z2

Phone: 519-821-5060
Fax: 519-821-9606
info@semex.com

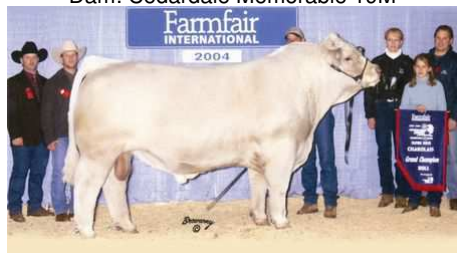


Cedardale TYRANT 31T

Sire: DBAR Baxter 4K
 DBAR Survivor 220M Kala's Frosty 121H
Dam: Baldrige Fasttrack 82F
 Cedardale Memorable 19M Cedardale Ms Juniper 12J



Dam: Cedardale Memorable 19M



Sire: DBAR Survivor 220M



Progeny: Cedardale Charolais



Progeny: Cedardale Charolais

Born: 1/22/2007 **Tattoo:** CED 31T
Breeder: Cedardale Charolais **Reg. #:** MC310603
Owner: Semex Alliance **BW:** 88 lbs
Weight: **AWW:** 881 lbs
Height: Frame 5.8 **AYW:** 1467 lbs
Scrotal: 37 cm **Stud code:** 0200CH00105

★ 5 Calving ease
 ★ 4 Growth
 ★ 4 Maternal
 ★ 4 Carcass

CCA-F11	ACC	EPD	Average	TOP
CE	0.50	97	[Red bar]	5%
BW	0.75	-2.5	[Red bar]	3%
WW	0.50	37	[Red bar]	75%
YW	0.42	59	[Red bar]	95%
MILK	0.27	23.4	[Red bar]	25%
TM	0.35	42	[Red bar]	45%
CW	0.47	-4	[Red bar]	95%
REA	0.47	-0.13	[Red bar]	100%
FAT	0.47	0.52	[Red bar]	65%
LY	0.47	-1.58	[Red bar]	95%
MARB	0.39	-0.04	[Red bar]	100%

Comments:

- Tyrant s popularity continues to improve with age. His progeny are showcasing incredible calving ease, are early maturing with early muscle expression. His daughters are also proving to be very feminine with loads of style and eye appeal.
- Tyrant is proving to be one of the breed s calving ease specialists without sacrificing growth. He ranks in the top 15% for BW and CE while maintaining a very strong 49 WW and an 80 YW EPD that also ranks him in the top 15% of the breed.
- He is the only known homozygous polled Survivor son on the market. Survivor provides muscle and early maturity on the topside of Tyrant s pedigree while his dam, (who also sired the Semex sensation Rebel), is providing maternal strength and calving ease on the bottom side.
- Homo Polled

Available to: 🇨🇦 Canada, 🇺🇸 USA, 🌐 International, 🇪🇺 EU (European Union)



130 Stone Rd. West
Guelph, Ontario
Canada N1G 3Z2

Phone: 519-821-5060
Fax: 519-821-9606
info@semex.com



Cedardale TYPHOON 8T



Schurrtop 5627
Sire: LT Wyoming Wind 4020 PLD **Dam:** Sharp Hills 206J
 Cedardale Neptune 34N
 LT Chap's Lady 2170P Berich Vegas Lady 64K



Sire: LT Wyoming Wind 4020 PLD

Born: 1/7/2007 **Tattoo:** CED 8T
Breeder: Cedardale Charolais **Reg. #:** MC310607
Owner: Semex Alliance **BW:** 85 lbs
Weight: **AWW:** 858 lbs
Height: Frame 6.5 **AYW:** 1589 lbs
Scrotal: 46 cm **Stud code:** 200CH0106

★ 3 Calving ease
 ★ 4 Growth
 ★ 3 Maternal
 ★ 4 Carcass

CCA-F11	ACC	EPD	Average	TOP
CE	0.46	59		50%
BW	0.42	1.2		35%
WW	0.32	55		3%
YW	0.28	89		25%
MILK	0.25	14.5		100%
TM	0.27	42		45%
CW	0.24	8		55%
REA	0.24	0.00		70%
FAT	0.25	0.64		80%
LY	0.24	-1.00		75%
MARB	0.23	0.02		60%

Comments:

- Exciting new polled genetics for the Semex Charolais program
- He will add frame, muscle, growth and maternal strength
- Polled

Available to: 🇨🇦 Canada, 🇺🇸 USA, 🌐 International, 🇪🇺 EU (European Union)



130 Stone Rd. West
 Guelph, Ontario
 Canada N1G 3Z2

Phone: 519-821-5060
Fax: 519-821-9606
info@semex.com



Circle-D 32P SPEED 59S

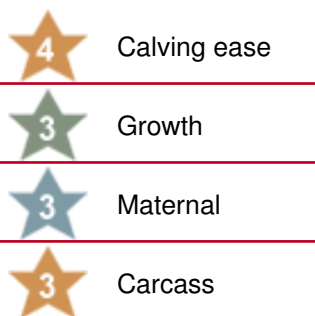


Sire: Circle-D 59N Biltmore 22H
 Circle-D 22H Pacman 32P
 Circle-D 9F Marie 31L

Dam: Remitall Kosher 137K
 Circle-D 137K Vanna 75P
 Circle-D 9F Vanna 59J

Born: 4/7/2006
Breeder: Marcel De Corby
Owner: Guilford Farms and Semex Alliance
Weight:
Height: Frame 5.8
Scrotal: 36 cm

Tattoo: AEIZ 59S
Reg. #: C02890780
BW: 82 lbs
AWW: 726 lbs
AYW: 1324 lbs
Stud code: 200HP0307



CHA-F11	ACC	EPD	Average	TOP
CE	0.10	-0.4		60%
BW	0.38	4.3		65%
WW	0.30	44.9		55%
YW	0.27	71.8		60%
MILK	0.14	12.7		75%
TM	--	35.2		70%
MCE	0.08	-1.0		80%
SC	0.05	0.7		40%
CW	0.02	83.1		65%
STAY	0.32	0.1		40%
FAT	0.06	-0.011		30%
REA	0.10	0.29		45%
MARB	0.04	0.00		60%

Comments:

- Calving ease and muscle in a polled package
- Outcross pedigree
- DLF, IEF & HYF

Available to: Canada, USA, International, EU (European Union)

130 Stone Rd.
 West
 Guelph, Ontario
 Canada N1G
 3Z2

Phone: 519-821-5060
Fax: 519-821-9606
info@semex.com



JEP POLL SEXTANT

Sire: Mas Du Clos
JEP Du Pavos Poirier Poll Haras

Dam: Dyfri Grandprix
JEP Poll Paillette P Poll Orangina



Dam: JEP-Poll-Paillette



Born: 12/4/2006 **Tattoo:** JEP 60S
Breeder: Ferme Jerome Poirier **Reg. #:** CFM0184361
Owner: Semex Alliance **BW:** 73 lbs
Weight: **AWW:** 765 lbs
Height: Frame 5.4 **AYW:** 1087 lbs
Scrotal: 34 cm **Stud code:** 200LM0108

3 Calving ease

3 Growth

3 Maternal

3 Carcass

CLA-F11	ACC	EPD	Average	TOP
GEST	0.23	1.3		100%
CED	0.23	9.8		30%
BW	0.40	1.3		40%
WW	0.17	28.2		100%
YW	0.07	52.5		100%
CEM	0.19	1.1		90%
MILK	0.04	10.3		100%
MWW	0.08	24.4		--%
SC	0.02	-0.1		100%

Comments:

- Sextant is the new polled full-blood bull that has created a stir in Europe
- His combination of French genetics with North American polled genetics has provided a new pedigree for the market
- His dam is strong maternally, sound structured and will provide depth of body and muscle
- Sextant scored high on the Igenity tenderness test with a 6 out of 10 rating
- He is an excellent outcross terminal breeding option to provide low birth weights, carcass value and muscle
- Use Sextant to add carcass value and tenderness while incorporating new genetics into the polled full-blood Limousin market
- Polled Fullblood

Available to: Canada, USA, International, EU (European Union)



130 Stone Rd. West
Guelph, Ontario
Canada N1G 3Z2

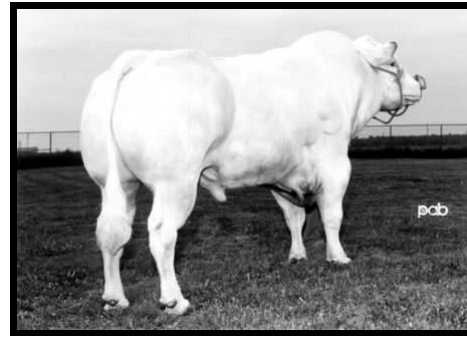
Phone: 519-821-5060
Fax: 519-821-9606
info@semex.com



Ideale Red CHERRY-BOMB

Sire: Geant De Beemont
Lawns Crackerjack
Amie De Coquaine

Dam: Inexes De La Croiz De Mer
Ideale Lady in Red
Limousin X



Born: 7/16/2005 **Tattoo:**

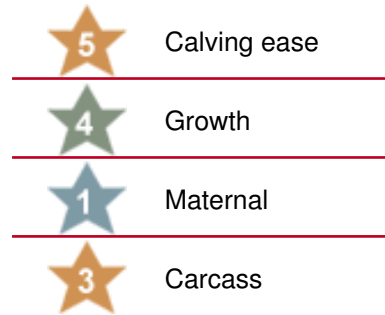
Breeder: La Ferme Id ale **Reg. #:** CAN R450

Owner: La Ferme Id ale **BW:**

Weight: **AWW:**

Height: **AYW:**

Scrotal: **Stud code:** 200BB0100



ACC	EPD	Average	TOP
-----	-----	---------	-----

Comments:

- New polled Belgian Blue genetics
- Improved calving ease combined with Belgian Blue muscling

Available to: 🇨🇦 Canada, 🇺🇸 USA, 🌐 International, 🇪🇺 EU (European Union)

130 Stone Rd.
West
Guelph, Ontario
Canada N1G
3Z2

Phone:
519-821-5060
Fax:
519-821-9606
info@semex.com



Bellevue's KENWORTH 15K

Sire: Marmacs Mr. Pollster 15Y
Marmacs Cagney 27C
Marmacs Heidi 17A

Dam: Bov Majesty Of The Alps
SYMS Felicia JO 200F
SYMS Wanda JO 20W



Progeny

Born: 8/1/2000 **Tattoo:** MDD 15K
Breeder: West Wind Blondes **Reg. #:** R15887(P)129N
Owner: Bellevue Blondes, MB **BW:** 102 lbs
Weight: **AWW:** 653 lbs
Height: 55 Frame 6 **AYW:** 1085 lbs
Scrotal: 35 cm **Stud code:** 200BD0100

★ 3 Calving ease

★ 3 Growth

★ 3 Maternal

★ 3 Carcass

BIO	ACC	EPD	Average	TOP
CE	0.79	-8		2%
MCE	0.52	-3		12%
BW	0.93	2.0		23%
WW	0.87	21		15%
MILK	0.53	19		74%
YG	0.74	20		10%

Comments:

- Polled fullblood that will provide performance, growth and easy fleshing

Available to: 🇨🇦 Canada, 🇺🇸 USA, 🌐 International, 🇪🇺 EU (European Union)



130 Stone Rd. West
Guelph, Ontario
Canada N1G 3Z2

Phone: 519-821-5060
Fax: 519-821-9606
info@semex.com

