



**BEST GENETICS  
DEZEMBER 2010**

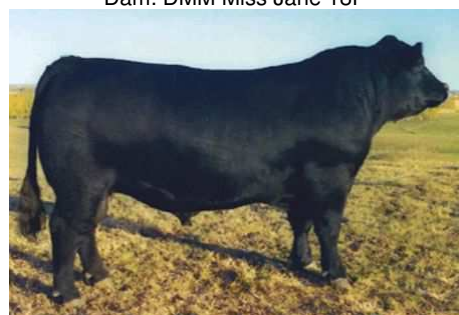
# DMM TRACTION 34P

Sire: TC Stockman 365  
DMM Traction 109J  
DMM Miss Essence 22B

Dam: DMM Essoteric 67R  
DMM Miss Jane 18F  
DMM Miss Jane 37D



Dam: DMM Miss Jane 18F



Sire: DMM Traction 109J

**Born:** 1/31/2004      **Tattoo:** DMM 34P  
**Breeder:** Miller Wilson Angus      **Reg. #:** 1234208  
**Owner:** Semex Alliance      **BW:** 84 lbs  
**Weight:**      **AWW:** 825 lbs  
**Height:** Frame 6.4      **AYW:** 1335 lbs  
**Scrotal:** 38 cm      **Stud code:** 200AN0303

★ 3 Calving ease  
 ★ 4 Growth  
 ★ 4 Maternal  
 ★ 3 Carcass

CAA-S11	ACC	EPD	Average	TOP
BW	0.23	5.0		87%
WW	0.19	35		71%
YW	0.14	63		72%
MILK	0.18	19		37%
TM	--	37		54%
CE	P	0.5		63%
MCE	P	8.5		21%

**Comments:**

- EU eligible and EEC qualified, Traction comes from the Miller Wilson herd where they have built one of the top Angus female herds in Canada revolving around maternal power. Traction is a sire that will provide muscle, frame, thickness and plenty of maternal strength!!
- AMF & NHF

**Available to:** 🇨🇦 Canada, 🇺🇸 USA, 🌐 International, 🇪🇺 EU (European Union)



130 Stone Rd. West  
Guelph, Ontario  
Canada N1G 3Z2

Phone: 519-821-5060  
Fax: 519-821-9606  
info@semex.com



# Bar 5 AN MORE DIRECTION 3405S

CA Future Direction 5321  
**Sire:** LCC Few Dollars More 013N  
 LCC Lakina K3218

HF Justice 52L  
**Dam:** Prime Time's Eileen 307'03  
 Prime Time's Eileen 29'99



Sire: LCC Few Dollars More 013N



Dam: Prime Time Eileen 307N

**Born:** 2/23/2006  
**Breeder:** Prime Time Cattle  
**Owner:** Bar 5 Stock Farms Ltd. & Claudia Junqueira  
**Weight:**  
**Height:** Frame 5.9  
**Scrotal:** 35.5 cm

**Tattoo:** COAR 3405S  
**Reg. #:** 1358070  
**BW:** 85 lbs  
**AWW:** 775 lbs  
**AYW:** 1408 lbs  
**Stud code:** 200AN0102

- ★ 4 Calving ease
- ★ 3 Growth
- ★ 4 Maternal
- ★ 4 Carcass

CAA-F09	ACC	EPD	Average	TOP
BW	0.05	1.8	<div style="width: 100%; height: 10px; background-color: red;"></div>	28%
WW	0.05	37	<div style="width: 61%; height: 10px; background-color: red;"></div>	61%
YW	0.05	68	<div style="width: 59%; height: 10px; background-color: red;"></div>	59%
MILK	0.05	23	<div style="width: 16%; height: 10px; background-color: red;"></div>	16%
TM	0.05	41	<div style="width: 32%; height: 10px; background-color: red;"></div>	32%
YG	0.05	31	<div style="width: 52%; height: 10px; background-color: red;"></div>	52%

**Comments:**

- More Direction is a great combination of USA's top carcass genetics and one of Canada's top cow families. He is a well structure calf with great depth of body and muscle expression.
- AMF- NHF

**Available to:** 🇨🇦 Canada, 🇺🇸 USA, 🌐 International, 🇪🇺 EU (European Union)



130 Stone Rd. West  
 Guelph, Ontario  
 Canada N1G 3Z2

**Phone:** 519-821-5060  
**Fax:** 519-821-9606  
[info@semex.com](mailto:info@semex.com)



# FGAF HOLLYWOOD 602S

**Sire:** N Bar Emulation Ext  
Leachman Saugahatchee Leachman B C 7100  
**Dam:** Stalburn Gentry 66G  
FGAF Maypower 002K Stalburn Mayflower 28C



Sire: Leachman Saugahatchee

**Born:** 1/2/2006    **Tattoo:** FGAF 602S  
**Breeder:** Ferme Gagnon    **Reg. #:** 1342373  
**Owner:** Ferme Gagnon    **BW:** 92 lbs  
**Weight:**    **AWW:** 878 lbs  
**Height:** Frame 6.2    **AYW:** 1467 lbs  
**Scrotal:** 38 cm    **Stud code:** 200AN0305

★ 4 Calving ease  
★ 4 Growth  
★ 5 Maternal  
★ 4 Carcass

CAA-S11	ACC	EPD	Average	TOP
BW	0.41	2.8		48%
WW	0.30	32		80%
YW	0.19	63		72%
MILK	0.20	17		49%
TM	--	33		70%
CE	0.28	5.0		26%
MCE	0.17	6.0		35%
REA	0.21	0.14		33%
CW	0.16	8		63%
MARB	0.20	-0.09		96%
FAT	0.17	0.023		75%

**Comments:**

- His sire, Saugahatchee, holds a number of show records across the USA
- Will provide eye appealing, well muscled genetics
- Will increase growth, thickness and structure
- Combines maternal strength and eye appeal.
- AMF - NHF

**Available to:** 🇨🇦 Canada, 🇺🇸 USA, 🌐 International, 🇪🇺 EU (European Union)



130 Stone Rd. West  
Guelph, Ontario  
Canada N1G 3Z2

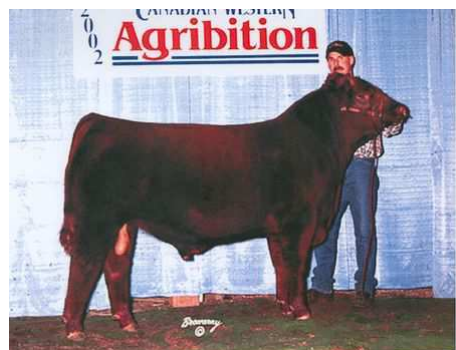
**Phone:** 519-821-5060  
**Fax:** 519-821-9606  
[info@semex.com](mailto:info@semex.com)



# Red U-2 INFINITE 408P

**Sire:** Red Blaze V415  
Red U-2 Icon 223M  
Red U-2 Anexa 5F

**Dam:** Red SSS Boomer 803B  
Red SVR Firefly 37J  
Red Brox Firefly 24F



Sire: Red U-2 Icon 223M



Infinite - Front Angle



Infinite - Rear Angle



Infinite - Yearling

**Born:** 1/5/2004  
**Breeder:** U-2 Ranch  
**Owner:** U-2 Ranch & Semex Alliance  
**Weight:**  
**Height:** Frame 6.2  
**Scrotal:** 37 cm (12 mo)

**Tattoo:** DUA 408P  
**Reg. #:** 1208758  
**BW:** 75 lbs  
**AWW:** 704 lbs  
**AYW:** 1327 lbs  
**Stud code:** 200AR0302



CAA-S11	ACC	EPD	Average	TOP
BW	0.66	-2.0		15%
WW	0.57	21		67%
YW	0.57	58		40%
MILK	0.35	18		29%
TM	--	29		45%
CE	0.42	11.0		8%
MCE	0.37	6.0		17%
YG	0.26	-0.18		93%
REA	0.22	0.01		45%
CW	0.46	33		49%
MARB	0.23	-0.47		99%
FAT	0.32	-0.060		1%
STAY	0.17	7		66%

**Comments:**

- Infinite may be one of the world s most widely used sires with 80,000 doses being used in over 34 countries
- His consistency for calving ease predictability, soundness of structure and the maternal strength of his daughters continue to elevate his popularity
- His ability to be an ideal complement in cross breeding programs have proven to be a great asset
- Infinite posts a -2.4 BW EPD ranking him in the top 12% of the breed
- His pedigree has proven to be highly marketable and can be found topping shows and sales
- Use Infinite for calving ease predictability in your cross breeding programs
- OSF

**Available to:** Canada, USA, International, EU (European Union)



130 Stone Rd. West  
Guelph, Ontario  
Canada N1G 3Z2

**Phone:** 519-821-5060  
**Fax:** 519-821-9606  
[info@semex.com](mailto:info@semex.com)



# Red Bar 5 AR DYNAMITE 252R



**Sire:** Red Leachman King Rob 8621  
Red LCC Saskatoon A777L  
Red Bar SP Ms Second

**Dam:** Red Holland Lane Wil-Sel 24G  
Red Ravenna 12M  
Red Ravenna 5H



Sire: Red LCC Saskatoon A777L

**Born:** 1/2/2005      **Tattoo:** COAR 252R  
**Breeder:** Bar 5 Stock Farms      **Reg. #:** 1282348  
**Owner:** Bar 5 Stock Farms      **BW:** 75 lbs  
**Weight:**      **AWW:** 780 lbs  
**Height:** Frame 6.3      **AYW:** 1369 lbs  
**Scrotal:** 41 cm      **Stud code:** 028AR0391

★ 4 Calving ease  
 ★ 3 Growth  
 ★ 3 Maternal  
 ★ 4 Carcass

CAA-F08	ACC	EPD	Average	TOP
BW	0.28	0.2		35%
WW	0.16	26		65%
YW	0.15	46		65%
MILK	0.12	14		55%
TM	--	27		65%
CE	0.13	4.0		55%
MCE	0.12	6.0		20%
STAY	0.00	11		40%

**Comments:**

- Dynamite is a powerful bull with plenty of depth and muscling. He is definitely a performance bull that will produce calves with exceptional hind quarters and growth without sacrificing calving ease.

**Available to:** 🇨🇦 Canada, 🇺🇸 USA, 🌐 International



130 Stone Rd. West  
Guelph, Ontario  
Canada N1G 3Z2

**Phone:** 519-821-5060  
**Fax:** 519-821-9606  
[info@semex.com](mailto:info@semex.com)



# Cedardale REBEL 3R

**Sire:** S\$ Montana Silver  
LT Silver Value 2122  
LT Unlimited Maid

**Dam:** Baldrige Fasttrack 82F  
Cedardale Memorable 19M  
Cedardale Ms Juniper 12J



Dam: Cedardale Memorable 19M

**Born:** 1/19/2005      **Tattoo:** CED 3R  
**Breeder:** Cedardale Charolais      **Reg. #:** MC294731  
**Owner:** Cedardale Charolais      **BW:** 92 lbs  
**Weight:**      **AWW:** 840 lbs  
**Height:** Frame 6.3      **AYW:** 1391 lbs  
**Scrotal:** 35 cm      **Stud code:** 200CH0102

★ 5 Calving ease

---

★ 4 Growth

---

★ 4 Maternal

---

★ 4 Carcass

CCA-S11	ACC	EPD	Average	TOP
CE	0.50	75		30%
BW	0.73	0.9		30%
WW	0.52	54		3%
YW	0.41	91		20%
SC	PE	-0.10		35%
MILK	0.31	17.4		85%
TM	0.38	45		25%
CW	0.50	13		35%
REA	0.50	0.02		65%
FAT	0.50	0.68		90%
LY	0.51	-1.12		90%
MARB	0.43	0.02		60%

**Comments:**

- Rebel is one of the all-time highest selling Charolais bulls, made popular for his ability to provide calving ease and maternal strength
- He is a great combination of performance from his paternal side and maternal strength and calving ease on his bottom side
- Rebel has been sampled in 36 countries and is a major component of the current Thai synthetic breed being developed in Thailand
- Use Rebel for his balance of calving ease, maternal strength and easy fleshing abilities
- Homo Polled

**Available to:** 🇨🇦 Canada, 🇺🇸 USA, 🌐 International, 🇪🇺 EU (European Union)



130 Stone Rd. West  
Guelph, Ontario  
Canada N1G 3Z2

**Phone:** 519-821-5060  
**Fax:** 519-821-9606  
[info@semex.com](mailto:info@semex.com)

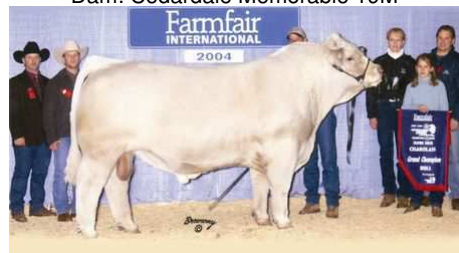


# Cedardale TYRANT 31T

**Sire:** DBAR Baxter 4K  
 DBAR Survivor 220M Kala's Frosty 121H  
**Dam:** Baldrige Fasttrack 82F  
 Cedardale Memorable 19M Cedardale Ms Juniper 12J



Dam: Cedardale Memorable 19M



Sire: DBAR Survivor 220M



Progeny: Cedardale Charolais



Progeny: Cedardale Charolais

**Born:** 1/22/2007  
**Breeder:** Cedardale Charolais  
**Owner:** Semex Alliance  
**Weight:**  
**Height:** Frame 5.8  
**Scrotal:** 37 cm  
**Tattoo:** CED 31T  
**Reg. #:** MC310603  
**BW:** 88 lbs  
**AWW:** 881 lbs  
**AYW:** 1467 lbs  
**Stud code:** 0200CH00105

- Calving ease

---

- Growth

---

- Maternal

---

- Carcass

CCA-S11	ACC	EPD	Average	TOP
CE	0.48	90		15%
BW	0.70	-2.1		4%
WW	0.47	39		60%
YW	0.30	67		80%
MILK	0.27	23.7		20%
TM	0.34	43		30%
CW	0.47	-4		95%
REA	0.47	-0.13		100%
FAT	0.47	0.52		75%
LY	0.47	-1.58		95%
MARB	0.39	-0.04		100%

**Comments:**

- Tyrant s popularity continues to improve with age. His progeny are showcasing incredible calving ease, are early maturing with early muscle expression. His daughters are also proving to be very feminine with loads of style and eye appeal.
- Tyrant is proving to be one of the breed s calving ease specialists without sacrificing growth. He ranks in the top 15% for BW and CE while maintaining a very strong 49 WW and an 80 YW EPD that also ranks him in the top 15% of the breed.
- He is the only known homozygous polled Survivor son on the market. Survivor provides muscle and early maturity on the topside of Tyrant s pedigree while his dam, (who also sired the Semex sensation Rebel), is providing maternal strength and calving ease on the bottom side.
- Homo Polled

**Available to:** Canada, USA, International, EU (European Union)



130 Stone Rd. West  
Guelph, Ontario  
Canada N1G 3Z2

**Phone:** 519-821-5060  
**Fax:** 519-821-9606  
[info@semex.com](mailto:info@semex.com)



# Cedardale TYPHOON 8T



Schurrtop 5627  
**Sire:** LT Wyoming Wind 4020 PLD **Dam:** Sharp Hills 206J  
 Cedardale Neptune 34N  
 LT Chap's Lady 2170P Berich Vegas Lady 64K



Sire: LT Wyoming Wind 4020 PLD

**Born:** 1/7/2007 **Tattoo:** CED 8T  
**Breeder:** Cedardale Charolais **Reg. #:** MC310607  
**Owner:** Semex Alliance **BW:** 85 lbs  
**Weight:** **AWW:** 858 lbs  
**Height:** Frame 6.5 **AYW:** 1589 lbs  
**Scrotal:** 46 cm **Stud code:** 200CH0106

★ 3 Calving ease  
 ★ 4 Growth  
 ★ 3 Maternal  
 ★ 4 Carcass

CCA-S11	ACC	EPD	Average	TOP
CE	0.25	39		70%
BW	0.25	2.5		60%
WW	0.21	48		15%
YW	0.21	80		45%
MILK	0.21	16.2		90%
TM	0.21	40		55%
CW	0.21	8		60%
REA	0.24	0.00		75%
FAT	0.24	0.64		90%
LY	0.25	-1.00		85%
MARB	0.24	0.02		60%

**Comments:**

- Exciting new polled genetics for the Semex Charolais program
- He will add frame, muscle, growth and maternal strength
- Polled

**Available to:** 🇨🇦 Canada, 🇺🇸 USA, 🌐 International, 🇪🇺 EU (European Union)



130 Stone Rd. West  
 Guelph, Ontario  
 Canada N1G 3Z2

**Phone:** 519-821-5060  
**Fax:** 519-821-9606  
[info@semex.com](mailto:info@semex.com)



# Circle-D 32P SPEED 59S

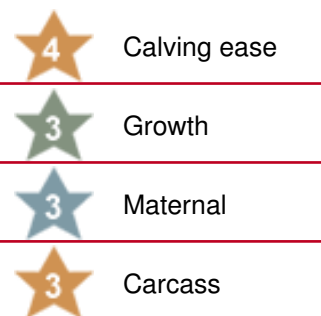


**Sire:** Circle-D 59N Biltmore 22H  
 Circle-D 22H Pacman 32P  
 Circle-D 9F Marie 31L

**Dam:** Remitall Koshier 137K  
 Circle-D 137K Vanna 75P  
 Circle-D 9F Vanna 59J

**Born:** 4/7/2006  
**Breeder:** Marcel De Corby  
**Owner:** Guilford Farms and Semex Alliance  
**Weight:**  
**Height:** Frame 5.8  
**Scrotal:** 36 cm

**Tattoo:** AEIZ 59S  
**Reg. #:** C02890780  
**BW:** 82 lbs  
**AWW:** 726 lbs  
**AYW:** 1324 lbs  
**Stud code:** 200HP0307



CHA-S11	ACC	EPD	Average	TOP
CE	0.10	-0.7		65%
BW	0.38	4.3		60%
WW	0.30	43.0		60%
YW	0.27	69.4		65%
MILK	0.13	12.9		75%
TM	--	34.4		75%
MCE	0.08	-1.0		80%
SC	0.04	0.7		40%
CW	0.58	16.4		80%
STAY	0.32	0.1		40%
FAT	0.06	-0.011		30%
REA	0.10	0.25		50%
MARB	0.04	0.00		60%

**Comments:**

- Calving ease and muscle in a polled package
- Outcross pedigree

**Available to:** Canada, USA, International, EU (European Union)

130 Stone Rd.  
 West  
 Guelph, Ontario  
 Canada N1G  
 3Z2

**Phone:** 519-821-5060  
**Fax:** 519-821-9606  
[info@semex.com](mailto:info@semex.com)



# RPY Paynes THUNDERSTRUCK

**Sire:** Wulf's Rambler  
Wulfs Klint 5874K  
Wulfs Example

**Dam:** Taz  
Paynes Loulou RPY 74L  
Greenwood Gypsy



Sire: Wulfs Klint 5874K



Thunderstruck - Yearling

**Born:** 1/23/2004      **Tattoo:** RPY 17P  
**Breeder:** Paynes Livestock      **Reg. #:** CPM0164853  
**Owner:** Belldoon Farms Ltd      **BW:** 96 lbs  
**Weight:**      **AWW:** 920 lbs  
**Height:** Frame 6.4      **AYW:** 1447 lbs  
**Scrotal:** 35 cm      **Stud code:** 200LM0107

★ 4 Calving ease

---

★ 4 Growth

---

★ 4 Maternal

---

★ 5 Carcass

CLA-S11	ACC	EPD	Average	TOP
GEST	0.67	-4.8		1%
CED	0.60	2.4		100%
BW	0.74	2.5		70%
WW	0.54	51.4		20%
YW	0.26	90.6		30%
CEM	0.59	-5.6		100%
MILK	0.31	22.4		40%
MWW	0.39	48.1		--%
SC	0.24	0.7		20%
DOC	0.49	26.6		--%
STAY	PE	19.2		40%
CW	PE	23.4		40%
REA	PE	0.66		20%
FAT	PE	-0.02		--%
MARB	PE	-0.08		70%

**Comments:**

- Thunderstruck will add performance and muscle with his proven performance pedigree while maintaining moderate calving ease
- He will increase REA and ranks at the top the breed for REA with a 0.67 EPD
- He is homo polled, 90% purebred and has been a EU favorite for years
- Homo Polled 90% Purebred
- Limited semen available

**Available to:** 🇨🇦 Canada, 🇺🇸 USA, 🌐 International



130 Stone Rd. West  
Guelph, Ontario  
Canada N1G 3Z2

**Phone:** 519-821-5060  
**Fax:** 519-821-9606  
[info@semex.com](mailto:info@semex.com)



## JEP POLL SEXTANT

Sire: Mas Du Clos  
JEP Du Pavos Poirier Poll Haras

Dam: Dyfri Grandprix  
JEP Poll Paillette P Poll Orangina



Dam: JEP-Poll-Paillette

**Born:** 12/4/2006      **Tattoo:** JEP 60S  
**Breeder:** Ferme Jerome Poirier      **Reg. #:** CFM0184361  
**Owner:** Semex Alliance      **BW:** 73 lbs  
**Weight:**      **AWW:** 765 lbs  
**Height:** Frame 5.4      **AYW:** 1087 lbs  
**Scrotal:** 34 cm      **Stud code:** 200LM0108

3 Calving ease

3 Growth

3 Maternal

3 Carcass

CLA-S11	ACC	EPD	Average	TOP
GEST	0.19	1.1	<div style="width: 100%;"></div>	100%
CED	0.22	9.8	<div style="width: 30%;"></div>	30%
BW	0.36	1.4	<div style="width: 40%;"></div>	40%
WW	0.13	29.1	<div style="width: 100%;"></div>	100%
YW	0.05	56.9	<div style="width: 100%;"></div>	100%
CEM	0.19	0.9	<div style="width: 90%;"></div>	90%
MILK	0.04	10.1	<div style="width: 100%;"></div>	100%
MWW	0.07	24.7	<div style="width: 0%;"></div>	--%
SC	PE	-0.1	<div style="width: 100%;"></div>	100%

**Comments:**

- Sextant is the new polled full-blood bull that has created a stir in Europe
- His combination of French genetics with North American polled genetics has provided a new pedigree for the market
- His dam is strong maternally, sound structured and will provide depth of body and muscle
- Sextant scored high on the Igenity tenderness test with a 6 out of 10 rating
- He is an excellent outcross terminal breeding option to provide low birth weights, carcass value and muscle
- Use Sextant to add carcass value and tenderness while incorporating new genetics into the polled full-blood Limousin market
- Polled Fullblood

**Available to:** 🇨🇦 Canada, 🇺🇸 USA, 🌐 International, 🇪🇺 EU (European Union)



130 Stone Rd. West  
Guelph, Ontario  
Canada N1G 3Z2

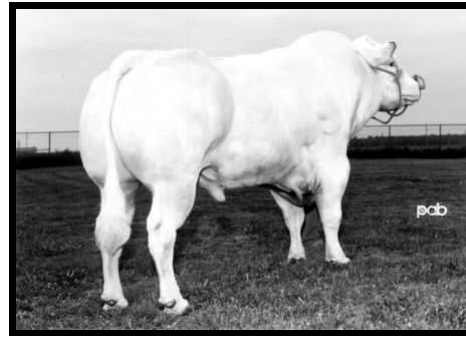
**Phone:** 519-821-5060  
**Fax:** 519-821-9606  
[info@semex.com](mailto:info@semex.com)



# Ideale Red CHERRY-BOMB

**Sire:** Geant De Beemont  
Lawns Crackerjack  
Amie De Coquaine

**Dam:** Inexes De La Croiz De Mer  
Ideale Lady in Red  
Limousin X



**Born:** 7/16/2005      **Tattoo:**

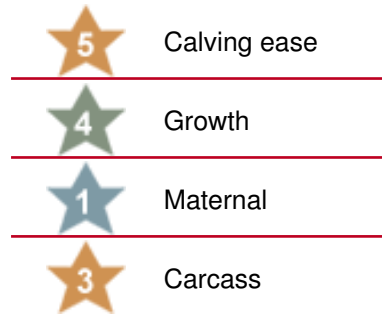
**Breeder:** La Ferme Id ale      **Reg. #:** CAN R450

**Owner:** La Ferme Id ale      **BW:**

**Weight:**      **AWW:**

**Height:**      **AYW:**

**Scrotal:**      **Stud code:** 200BB0100



ACC	EPD	Average	TOP
-----	-----	---------	-----

**Comments:**

- New polled Belgian Blue genetics
- Improved calving ease combined with Belgian Blue muscling

**Available to:** 🇨🇦 Canada, 🇺🇸 USA, 🌐 International, 🇪🇺 EU (European Union)

130 Stone Rd.  
West  
Guelph, Ontario  
Canada N1G  
3Z2

**Phone:**  
519-821-5060  
**Fax:**  
519-821-9606  
[info@semex.com](mailto:info@semex.com)



# Bellevue's KENWORTH 15K

**Sire:** Marmacs Mr. Pollster 15Y  
Marmacs Cagney 27C  
Marmacs Heidi 17A

**Dam:** Bov Majesty Of The Alps  
SYMS Felicia JO 200F  
SYMS Wanda JO 20W



Progeny

**Born:** 8/1/2000      **Tattoo:** MDD 15K  
**Breeder:** West Wind Blondes      **Reg. #:** R15887(P)129N  
**Owner:** Bellevue Blondes, MB      **BW:** 102 lbs  
**Weight:**      **AWW:** 653 lbs  
**Height:** 55 Frame 6      **AYW:** 1085 lbs  
**Scrotal:** 35 cm      **Stud code:** 200BD0100

★ 3 Calving ease

---

★ 3 Growth

---

★ 3 Maternal

---

★ 3 Carcass

BIO	ACC	EPD	Average	TOP
CE	0.79	-8		2%
MCE	0.52	-3		12%
BW	0.93	2.0		23%
WW	0.87	21		15%
MILK	0.53	19		74%
YG	0.74	20		10%

**Comments:**

- Polled fullblood that will provide performance, growth and easy fleshing

**Available to:** 🇨🇦 Canada, 🇺🇸 USA, 🌐 International, 🇪🇺 EU (European Union)



130 Stone Rd. West  
Guelph, Ontario  
Canada N1G 3Z2

**Phone:** 519-821-5060  
**Fax:** 519-821-9606  
[info@semex.com](mailto:info@semex.com)

