



**BEST GENETICS  
ANGUS ZW AUGUST 2010**

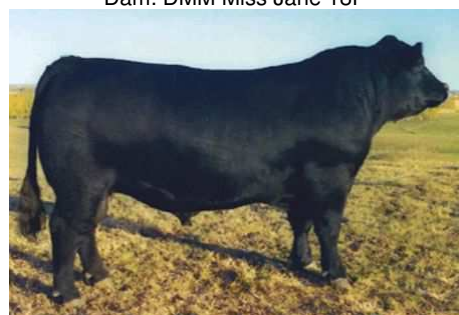
# DMM TRACTION 34P

**Sire:** TC Stockman 365  
DMM Traction 109J  
DMM Miss Essence 22B

**Dam:** DMM Essoteric 67R  
DMM Miss Jane 18F  
DMM Miss Jane 37D



Dam: DMM Miss Jane 18F



Sire: DMM Traction 109J

**Born:** 1/31/2004      **Tattoo:** DMM 34P  
**Breeder:** Miller Wilson Angus      **Reg. #:** 1234208  
**Owner:** Semex Alliance      **BW:** 84 lbs  
**Weight:**      **AWW:** 825 lbs  
**Height:** Frame 6.4      **AYW:** 1335 lbs  
**Scrotal:** 38 cm      **Stud code:** 200AN0303

★ 3 Calving ease  
 ★ 4 Growth  
 ★ 4 Maternal  
 ★ 3 Carcass

CAA-F06	ACC	EPD	Average	TOP
BW	PE	5.7	<div style="width: 100%; height: 10px; background-color: red;"></div>	90%
WW	PE	36	<div style="width: 100%; height: 10px; background-color: red;"></div>	70%
YW	PE	67	<div style="width: 100%; height: 10px; background-color: red;"></div>	65%
MILK	PE	16	<div style="width: 100%; height: 10px; background-color: red;"></div>	50%
TM	PE	34	<div style="width: 100%; height: 10px; background-color: red;"></div>	60%

**Comments:**

- EU eligible and EEC qualified, Traction comes from the Miller Wilson herd where they have built one of the top Angus female herds in Canada revolving around maternal power. Traction is a sire that will provide muscle, frame, thickness and plenty of maternal strength!!
- AMF - NHF

**Available to:** 🇨🇦 Canada, 🌐 International, 🇪🇺 EU (European Union)



130 Stone Rd. West  
Guelph, Ontario  
Canada N1G 3Z2

**Phone:** 519-821-5060  
**Fax:** 519-821-9606  
[info@semex.com](mailto:info@semex.com)



# Bar 5 AN MORE DIRECTION 3405S

CA Future Direction 5321  
**Sire:** LCC Few Dollars More 013N  
 LCC Lakina K3218

HF Justice 52L  
**Dam:** Prime Time's Eileen 307'03  
 Prime Time's Eileen 29'99



Sire: LCC Few Dollars More 013N



Dam: Prime Time Eileen 307N

**Born:** 2/23/2006  
**Breeder:** Prime Time Cattle  
**Owner:** Bar 5 Stock Farms Ltd. & Claudia Junqueira  
**Weight:**  
**Height:** Frame 5.9  
**Scrotal:** 35.5 cm

**Tattoo:** COAR 3405S  
**Reg. #:** 1358070  
**BW:** 85 lbs  
**AWW:** 775 lbs  
**AYW:** 1408 lbs  
**Stud code:** 200AN0102

★ 4 Calving ease  
 ★ 3 Growth  
 ★ 4 Maternal  
 ★ 4 Carcass

CAA-F09	ACC	EPD	Average	TOP
BW	0.05	1.8		28%
WW	0.05	37		61%
YW	0.05	68		59%
MILK	0.05	23		16%
TM	0.05	41		32%
YG	0.05	31		52%

**Comments:**

- More Direction is a great combination of USA's top carcass genetics and one of Canada's top cow families. He is a well structure calf with great depth of body and muscle expression.
- AMF- NHF

**Available to:** 🇨🇦 Canada, 🌐 International, 🇪🇺 EU (European Union)



130 Stone Rd. West  
 Guelph, Ontario  
 Canada N1G 3Z2

**Phone:** 519-821-5060  
**Fax:** 519-821-9606  
[info@semex.com](mailto:info@semex.com)




# FGAF HOLLYWOOD 602S

**Sire:** N Bar Emulation Ext  
Leachman Saugahatchee Leachman B C 7100  
**Dam:** Stalburn Gentry 66G  
FGAF Maypower 002K Stalburn Mayflower 28C




Sire: Leachman Saugahatchee


**Born:** 1/2/2006    **Tattoo:** FGAF 602S  
**Breeder:** Ferme Gagnon    **Reg. #:** 1342373  
**Owner:** Ferme Gagnon    **BW:** 92 lbs  
**Weight:**    **AWW:** 878 lbs  
**Height:** Frame 6.2    **AYW:** 1467 lbs  
**Scrotal:** 38 cm    **Stud code:** 200AN0305

-  Calving ease


---

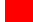
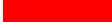
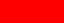
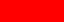

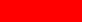

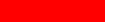
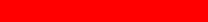

-  Growth

---

-  Maternal

---

-  Carcass

CAA-F10	ACC	EPD	Average	TOP
BW	0.38	3.2		56%
WW	0.28	33		74%
YW	0.19	65		65%
MILK	0.20	17		50%
TM	--	34		64%
YG	0.19	32		49%
CE	0.26	4.0		32%
MCE	0.17	5.0		45%
REA	0.22	0.13		27%
MARB	0.19	-0.13		96%
FAT	0.17	0.026		81%

**Comments:**

- His sire, Saugahatchee, holds a number of show records across the USA
- Will provide eye appealing, well muscled genetics
- Will increase growth, thickness and structure
- Combines maternal strength and eye appeal.
- AMF - NHF

**Available to:**  Canada,  International,  EU (European Union)



130 Stone Rd. West  
Guelph, Ontario  
Canada N1G 3Z2

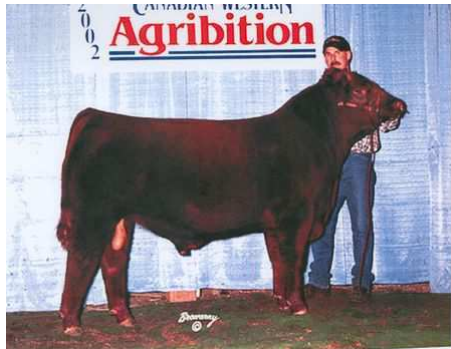
**Phone:**  
519-821-5060  
**Fax:** 519-821-9606  
[info@semex.com](mailto:info@semex.com)



# Red U-2 INFINITE 408P

**Sire:** Red Blaze V415  
Red U-2 Icon 223M  
Red U-2 Anexa 5F

**Dam:** Red SSS Boomer 803B  
Red SVR Firefly 37J  
Red Brox Firefly 24F



Sire: Red U-2 Icon 223M



Infinite - Front Angle



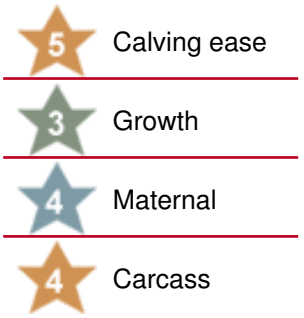
Infinite - Rear Angle



Infinite - Yearling

**Born:** 1/5/2004  
**Breeder:** U-2 Ranch  
**Owner:** U-2 Ranch & Semex Alliance  
**Weight:**  
**Height:** Frame 6.2  
**Scrotal:** 37 cm (12 mo)

**Tattoo:** DUA 408P  
**Reg. #:** 1208758  
**BW:** 75 lbs  
**AWW:** 704 lbs  
**AYW:** 1327 lbs  
**Stud code:** 200AR0302



CAA-F10	ACC	EPD	Average	TOP
BW	0.62	-2.3	<div style="width: 14%;"></div>	14%
WW	0.51	25	<div style="width: 52%;"></div>	52%
YW	0.52	62	<div style="width: 31%;"></div>	31%
MILK	0.29	16	<div style="width: 40%;"></div>	40%
TM	--	28	<div style="width: 47%;"></div>	47%
CE	0.37	10	<div style="width: 10%;"></div>	10%
MCE	0.32	4	<div style="width: 34%;"></div>	34%
REA	0.22	0.00	<div style="width: 43%;"></div>	43%
MARB	0.23	-0.47	<div style="width: 99%;"></div>	99%
FAT	0.32	-0.060	<div style="width: 1%;"></div>	1%
STAY	0.11	7	<div style="width: 64%;"></div>	64%

**Comments:**

- Infinite may be one of the world's most widely used sires with 80,000 doses being used in over 34 countries
- His consistency for calving ease predictability, soundness of structure and the maternal strength of his daughters continue to elevate his popularity
- His ability to be an ideal complement in cross breeding programs have proven to be a great asset
- Infinite posts a -2.4 BW EPD ranking him in the top 12% of the breed
- His pedigree has proven to be highly marketable and can be found topping shows and sales
- Use Infinite for calving ease predictability in your cross breeding programs
- OSF

**Available to:** 🇨🇦 Canada, 🇺🇸 USA, 🌐 International, 🇪🇺 EU (European Union)



130 Stone Rd. West  
Guelph, Ontario  
Canada N1G 3Z2

**Phone:** 519-821-5060  
**Fax:** 519-821-9606  
[info@semex.com](mailto:info@semex.com)



# Red Bar 5 AR DYNAMITE 252R



**Sire:** Red Leachman King Rob 8621  
Red LCC Saskatoon A777L  
Red Bar SP Ms Second

**Dam:** Red Holland Lane Wil-Sel 24G  
Red Ravenna 12M  
Red Ravenna 5H



Sire: Red LCC Saskatoon A777L

**Born:** 1/2/2005      **Tattoo:** COAR 252R  
**Breeder:** Bar 5 Stock Farms      **Reg. #:** 1282348  
**Owner:** Bar 5 Stock Farms      **BW:** 75 lbs  
**Weight:**      **AWW:** 780 lbs  
**Height:** Frame 6.3      **AYW:** 1369 lbs  
**Scrotal:** 41 cm      **Stud code:** 028AR0391

★ 4 Calving ease  
 ★ 3 Growth  
 ★ 3 Maternal  
 ★ 4 Carcass

CAA-F08	ACC	EPD	Average	TOP
BW	0.28	0.2		35%
WW	0.16	26		65%
YW	0.15	46		65%
MILK	0.12	14		55%
TM	--	27		65%
CE	0.13	4.0		55%
MCE	0.12	6.0		20%
STAY	0.00	11		40%

**Comments:**

- Dynamite is a powerful bull with plenty of depth and muscling. He is definitely a performance bull that will produce calves with exceptional hind quarters and growth without sacrificing calving ease.

**Available to:** 🇨🇦 Canada, 🌐 International



130 Stone Rd. West  
Guelph, Ontario  
Canada N1G 3Z2

**Phone:** 519-821-5060  
**Fax:** 519-821-9606  
[info@semex.com](mailto:info@semex.com)

